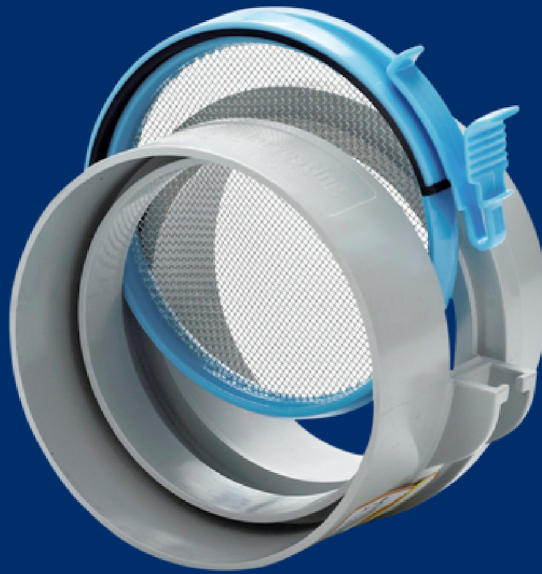


RAIN HARVESTING

by Blue Mountain Co

Mozzie Stoppas Hinged Screen



Installation and Specification Guide

PRODUCT DETAILS

Keep mosquitoes and other pests out of your tank with this easily maintained, spring-loaded, mosquito-proof screen.

It's inevitable that some maintenance is required at your overflow screen and this version makes it easy - just hinge out the mesh screen and brush or wash it off.

Code	Size	Country
TATO27	90mm	Australia
TATO28	90mm	
TATO27	90mm	New Zealand

Installation

WHAT'S IN THE BOX?

- Mozzie Stoppa Insect Proof Screen

TOOLS/MATERIALS YOU MAY REQUIRE

- Tape measure
- Marker pen
- Saw

INSTALLATION

New or upgrading from a non-glued Mozzie Stoppa Fixed Screen

1 - Select an installation point for your Mozzie Stoppa Hinged Screen. As it will require regular maintenance, we recommend installing your Mozzie-Stoppa Easy-Clean in a position that allows for easy access and cleaning. We recommend installing it directly into the overflow outlet of your tank

2 - Remove the non-glued Mozzie Stoppa Fixed Screen from the overflow outlet and overflow pipe and discard.

3 - If necessary, measure and remove a section of pipe leaving a gap between your overflow outlet and overflow pipe of approximately 25mm for your Mozzie Stoppa Hinged Screen, ensuring all cut edges are clean and smooth.

4 - Position your Mozzie Stoppa Hinged Screen so the screen opens upward. Use solvent weld glue to install the Mozzie Stoppa Hinged Screen into the gap you made in Step 3, between your overflow outlet and overflow pipe.

Upgrading from a glued Mozzie Stoppa Fixed Screen or overflow pipe

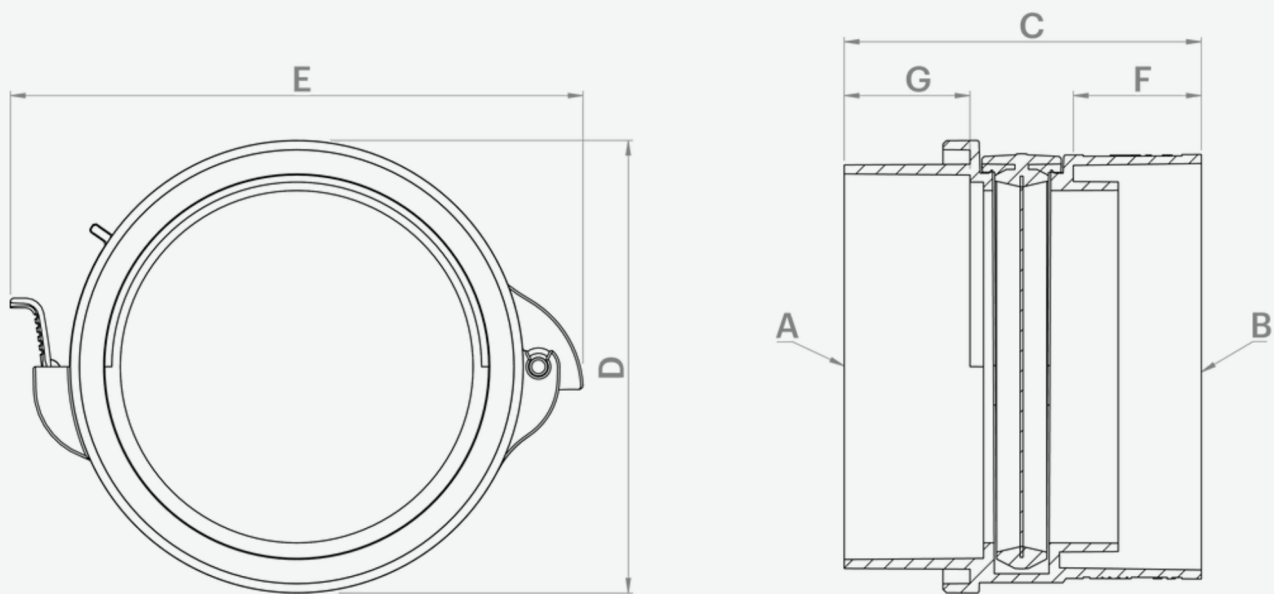
1 - Measure and remove a section of pipe leaving a gap between your overflow outlet and overflow pipe of approximately 25mm for your Mozzie Stoppa Hinged Screen, ensuring all cut edges are clean and smooth.

2 - Carefully remove the left-over pipe section or Mozzie Stoppa Fixed Screen by cutting out and removing from the overflow outlet.

3 - Position your Mozzie Stoppa Hinged Screen so the screen opens upward. Use solvent weld glue to install the Mozzie Stoppa Hinged Screen into the gap you made in Step 1, between your overflow outlet and overflow pipe.

Product Specifications

Mozzie Stoppas Hinged Screen



Dimensions & Pipe Fittings

COUNTRY	CODE	A	B	C	D	E	F	G
Australia	TATO27	90 M	90 F	80	101	127	28	28
	TATO28	90 F	90 F	102	101	127	28	20
New Zealand	TATO27	90 M	90 F	80	101	127	28	28

All dimensions are in mm unless otherwise stated.

Fitting guide:
F = Female / Socket Fitting
M = Male / Spigot Fitting (Pipe size)
IP = In-Pipe Fitting

Maintenance

We recommend regularly cleaning your Mozzie Stoppa Hinged Screen to prevent the mosquito proof screen from becoming clogged or blocked with sediments and debris.

Your Mozzie Stoppa Hinged Screen is designed to make maintenance and cleaning easy. Unlatch the hinged screen and hose or brush it off to clean. Replace the screen immediately after cleaning by pressing it down to firmly relatch in place so it continues to form a barrier against mosquitoes, frogs and pests.



A common misconception about collecting rainwater is that all you need is a roof, a tank and some rain. This 'tanking' approach cannot always be relied on to deliver the volume – or quality – of water that you require. That is where we can help.

With some thought, your rain harvesting system can provide you with cleaner water and lots of it. Whether you're completely reliant on tank water or wanting to keep the garden green, our simple steps will help you achieve your goal.

The Rain Harvesting approach to rainwater collection involves using tested and proven products to make quality rainwater available for use in and around your property. You don't need much to get started and you will be surprised how easy it is to get the most out of your rainwater system.

[How can we help you?](#)

COMPLIANCE

AS/NZS 4020:2005 – Testing of products for use in contact with drinking water

DISCLAIMER This product specification is not a complete guide to product usage. Further information is available from Rain Harvesting Pty Ltd and from the Installation and Operating Instructions. This specification sheet must be read in conjunction with the Installation and Operating Instructions and all applicable statutory requirement. Product specifications may change without notice. © Rain Harvesting Pty Ltd

RAIN HARVESTING

by Blue Mountain Co

For more information or to find out
how we can help, just give us a call on

+61 7 3248 9600

Or visit our website at

rainharvesting.com