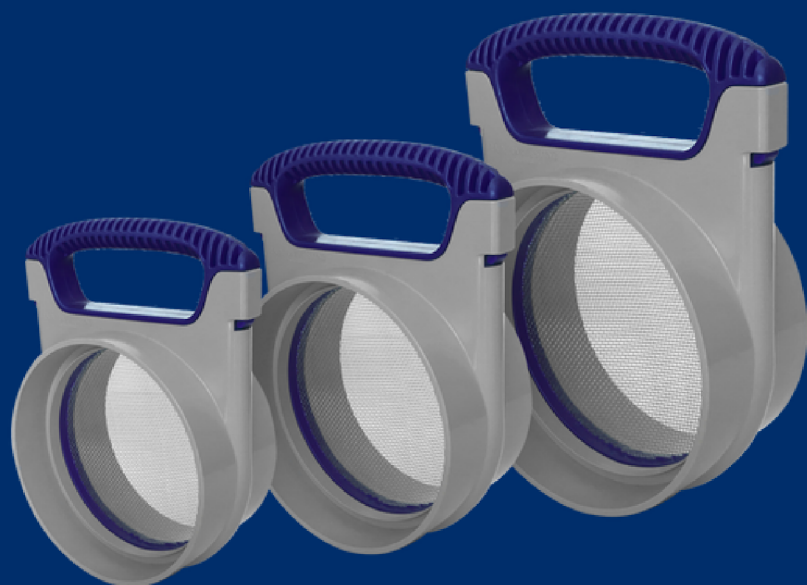


RAIN HARVESTING
by Blue Mountain Co

Mozzie Stoppas
w/ Removable Screen



Installation and Specification Guide

PRODUCT DETAILS

Mozzie Stoppas w/ Removable Screen improve water quality by keeping pests out of the rainwater tank and allowing the tank water to breathe. The screen is removable to make maintenance and cleaning easy.

Code	Size	Country
TATO70	90mm	Australia
TATO71	100mm	
TATO72	150mm	

Code	Size	Country
TATO170	3"	USA
TATO171	4"	
TATO370	80mm	South Africa
TATO71	110mm	
TATO570	68mm	UK
TATO71	110mm	
TATO670	90/75mm	Europe
TATO71	110mm	
TATO70	90mm	India
TATO71	110mm	
TATO72	160mm	

Installation

WHAT'S IN THE BOX?

- Mozzie Stoppas
- Socket to Socket adaptor

TOOLS/MATERIALS YOU MAY REQUIRE

- Tape measure
- Marker pen
- Saw
- Solvent weld glue (optional)

Mozzie Stoppas w/ Removable Screen

1 - Select an installation point for your Mozzie Stoppas w/ Removable Screen. As it will require regular maintenance, we recommend installing in a position that allows for easy access and cleaning. In most cases, the best position will be directly into the overflow outlet of your tank with the handle pointing upwards. Also ensure that the installation position allows the handle to be removed fully.

2 - If necessary, measure and remove a section of pipe leaving a gap between your overflow outlet and overflow pipe. For a Mozzie Stoppas w/ Removable Screen 90mm, we recommend removing approximately 22mm. For a Mozzie Stoppas w/ Removable Screen 100mm, we recommend removing approximately 24mm. And for the 150mm version, we recommend removing approximately 28mm. Once the pipes are cut, ensure the edges are clean and smooth.

NOTE: If adaptors are being used to adjust the pipe diameter, the recommended length for cutting out pipe will vary – measure with the adaptors in place.

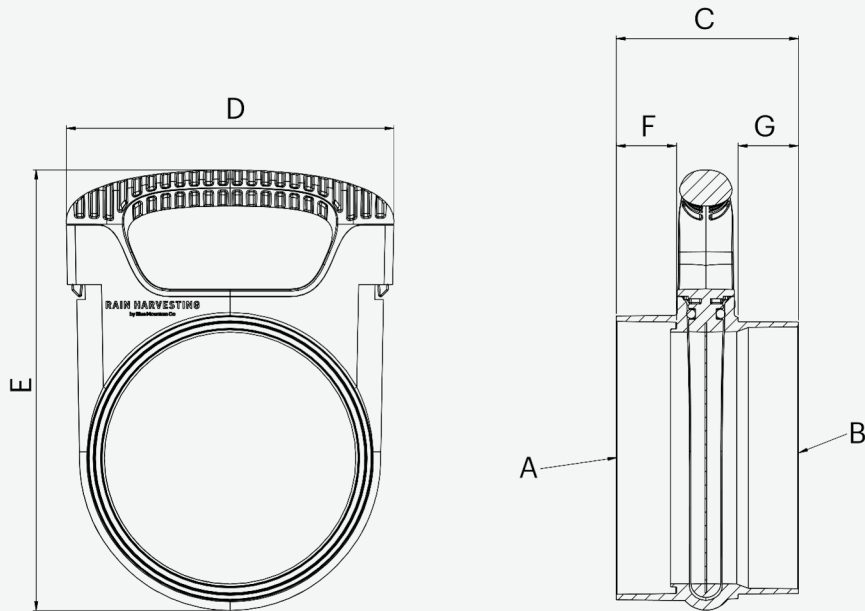
3 - Prior to gluing, remove the Mozzie Stoppas mesh cartridge, so that there is no chance of glue getting on the mesh.

4 - Use solvent weld glue to install the Mozzie Stoppas into the gap you made in Step 2, between your overflow outlet and overflow pipe.

5 - Once the solvent weld glue has dried, re-install your mesh cartridge into the Mozzie Stoppas body to secure your system and prevent pests from entering your tank.

Product Specifications

Mozzie Stoppas w/ Removable Screen



Country	Code	A	B	C	D	E	F	G
Australia	TATO70	90 F	90 M	60	109	146	20	20
			90 F	82	109	146	20	20
	TATO71	100 F	100 M	62	129	168	20	20
			100 F	84	129	168	20	20
	TATO72	150 F	150 M	107	186	230	40	40
			150 F	150	186	230	40	40
USA	TATO170	3" SDR35 F / SCH40 F	3" SDR35 F / SCH40 F	5.31"	4.29"	5.75"	0.83"	0.83"
	TATO171	4" SDR35 F / SCH40 F	4" SDR35 F / SCH40 F	5.35"	5.08"	6.61"	0.83"	0.83"
South Africa	TATO370	80 F	80 F	132	109	146	20	20
	TATO71	110 F	110 M	62	129	168	20	20
			110 F	84	129	168	20	20

All dimensions are in mm unless otherwise stated.

Fitting guide:

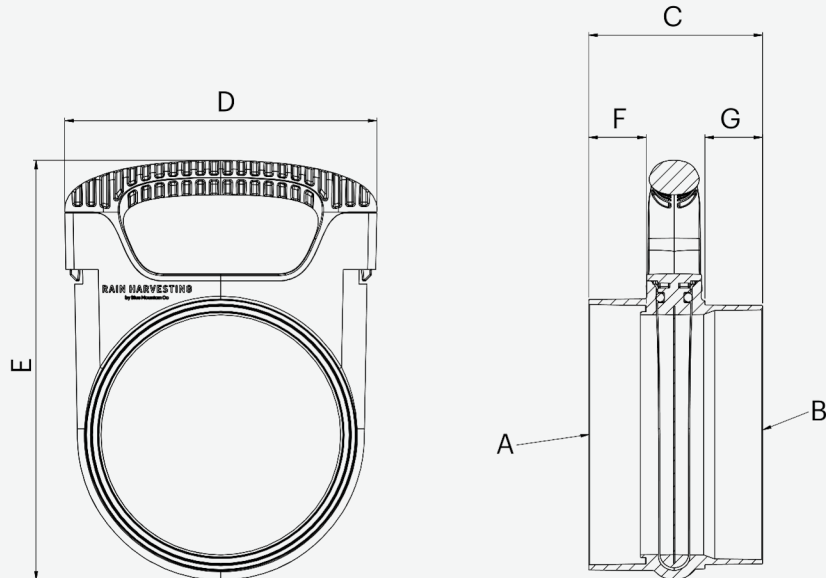
F = Female / Socket Fitting

M = Male / Spigot Fitting (Pipe size)

IP = In-Pipe Fitting

Product Specifications

Mozzie Stoppas w/ Removable Screen



Country	Code	A	B	C	D	E	F	G
UK	TATO570	68 F	68 F	145	109	146	20	20
	TATO71	110 F	110 M	62	129	168	20	20
			110 F	84	129	168	20	20
Europe	TATO670	90 F	90 M	60	109	146	20	20
			90 F	82	109	146	20	20
		75 F	75 F	145	109	146	20	20
	TATO71	110 F	110 M	62	129	168	20	20
			110 F	84	129	168	20	20
India	TATO70	90 F	90 M	60	109	146	20	20
			90 F	82	109	146	20	20
	TATO71	110 F	110 M	62	129	168	20	20
			110 F	84	129	168	20	20
	TATO72	160 F	160 M	107	186	230	40	40
			160 F	150	186	230	40	40

All dimensions are in mm unless otherwise stated.

Fitting guide:

F = Female / Socket Fitting

M = Male / Spigot Fitting (Pipe size)

IP = In-Pipe Fitting

Maintenance

Your Mozzie Stoppa w/ Removable Screen is designed to make maintenance and cleaning easy. Remove the mesh cartridge by pulling the handle directly out of the body. Replace the mesh cartridge immediately after cleaning by firmly inserting it back into the corresponding slot in the body so it continues to form a barrier against mosquitoes, frogs and pests.

Periodically inspect the mesh cartridge o-ring to ensure that the system seal is still performing optimally.



A common misconception about collecting rainwater is that all you need is a roof, a tank and some rain. This 'tanking' approach cannot always be relied on to deliver the volume – or quality – of water that you require. That is where we can help.

With some thought, your rain harvesting system can provide you with cleaner water and lots of it. Whether you're completely reliant on tank water or wanting to keep the garden green, our simple steps will help you achieve your goal.

The Rain Harvesting approach to rainwater collection involves using tested and proven products to make quality rainwater available for use in and around your property. You don't need much to get started and you will be surprised how easy it is to get the most out of your rainwater system.

[How can we help you?](#)

COMPLIANCE

- AS/NZS 4020:2005 – Testing of products for use in contact with drinking water

DISCLAIMER This product specification is not a complete guide to product usage. Further information is available from Rain Harvesting Pty Ltd and from the Installation and Operating Instructions. This specification sheet must be read in conjunction with the Installation and Operating Instructions and all applicable statutory requirement. Product specifications may change without notice. © Rain Harvesting Pty Ltd

RAIN HARVESTING

by Blue Mountain Co

For more information or to find out
how we can help, just give us a call on

+61 7 3248 9600

Or visit our website at

rainharvesting.com